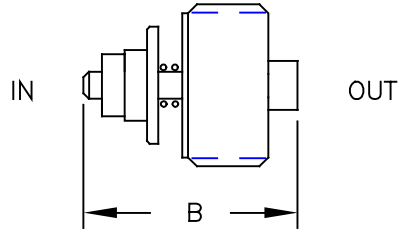




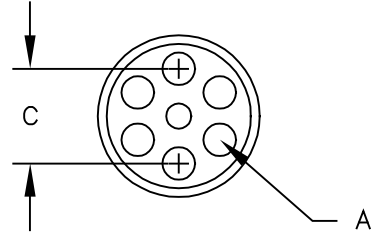
# VELOCITY FUSE

## IN-LINE SERIES

SAE Threaded Cartridge



(Arrow indicates direction of closing flow)



SPECIAL SPANNER ASSEMBLY  
TOOL REQUIRED FOR INSTALLATION

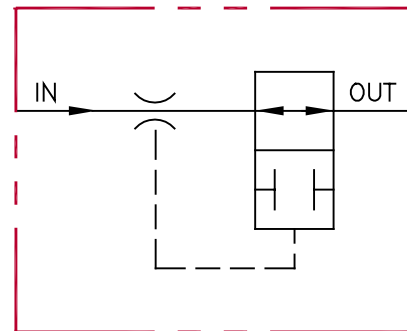
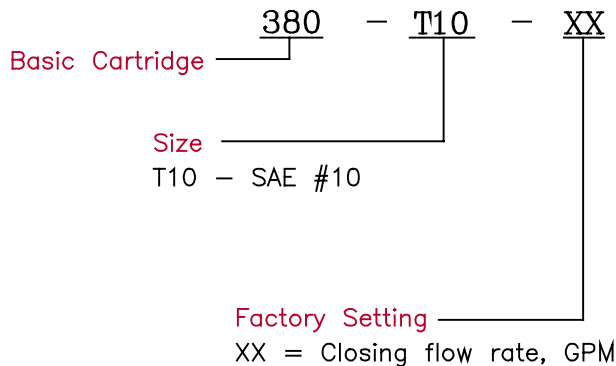
### SPECIFICATIONS

Type	In-line velocity fuse (hose break valve)	Closing Flow	Preset by factory to customer specified value (Tolerance: +20%/-0%)
Operation	Shuts off flow if it exceeds the preset rate. Fuse will remain closed until pressure is equalized. Reverse flow is free and uncontrolled.	Max. Pressure	3,000 psi
Material	All steel construction	Press. Differential	50 to 100 psi
Rated Flow	Up to 30 gpm	Fluid	General hydraulic fluid
		Operating Temp.	Not Applicable
		Seals	Not Applicable

### DIMENSIONS

Model	Thread Size	Flow Range	A Dia	B	C
380-T10-XX	7/8-14 unf	2 - 30 GPM	.176	1.16	.512

### ORDERING INFORMATION



All dimensions in inches