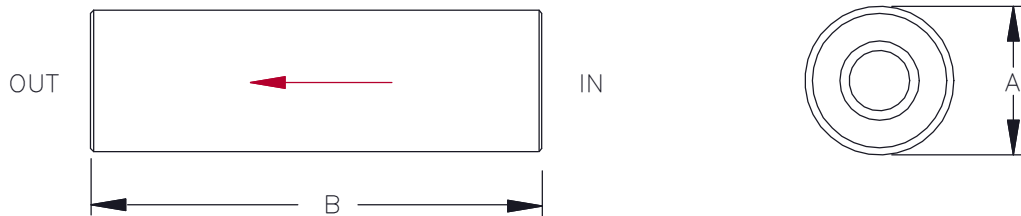




FIXED FLOW CONTROL PRESSURE COMPENSATED

Slip In Cartridge



(Arrow indicates direction of controlled flow)

SPECIFICATIONS

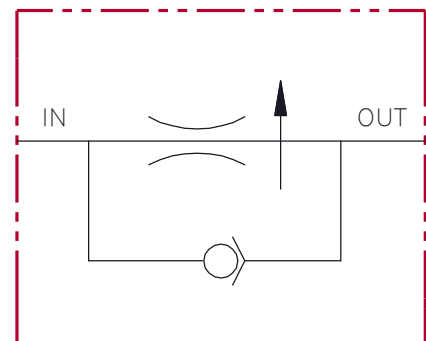
Type	Pressure compensated in-line flow control	Flow	Preset by factory to customer specified value (Tolerance: $\pm 15\%$)
Operation	Controls flow in one direction to a preset maximum over a varying pressure range. Reverse flow is free and uncontrolled.	Max. Pressure	3,000 psi
Material	Aluminum body with steel internal parts	Press. Differential	50 to 100 psi
Rated Flow	Up to 50 gpm	Fluid	General hydraulic fluid
		Operating Temp.	Not Applicable
		Seals	Not Applicable

DIMENSIONS

Model	Flow Range	Suggested Bore Dia	A Dia	B
150-795-XX	.5 - 15 GPM	.797/.802	.795	2.03
150-970-XX	1 - 30 GPM	.972/.977	.970	2.78
150-109-XX	1 - 30 GPM	1.097/1.102	1.095	3.19
150-122-XX	3 - 50 GPM	1.222/1.227	1.220	3.19

ORDERING INFORMATION

Basic Cartridge 150 - 795 - XX
 Size
 795 - .795 DIA
 970 - .970 DIA
 109 - 1.095 DIA
 122 - 1.220 DIA
 Factory Setting
 XX = Control Flow, GPM



All dimensions in inches