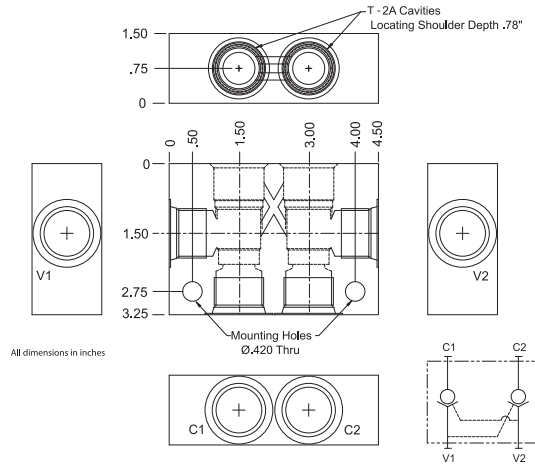


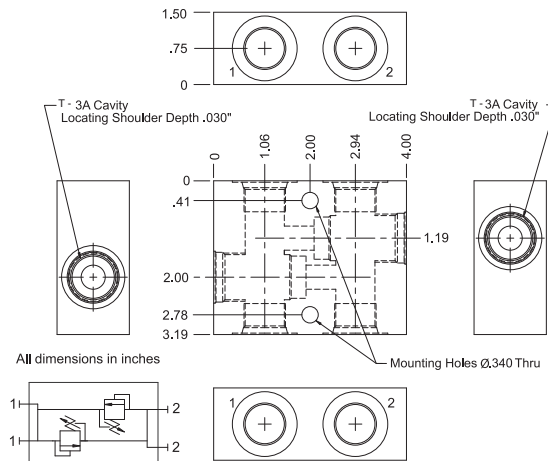
T-2A CAVITY CROSS-PILOTED VALVE BODIES  
FOR VALVE MODELS: GPOC2, GCB2 Series



Ordering Information

G2A-CP	—	4P	—	A
Base Model #		Port Size		Material
		4P - 1/2 npt		A - Aluminum
		6P - 3/4 npt		
		T8 - sae #8		
		T10 - sae #10		
		T12 - sae #12		

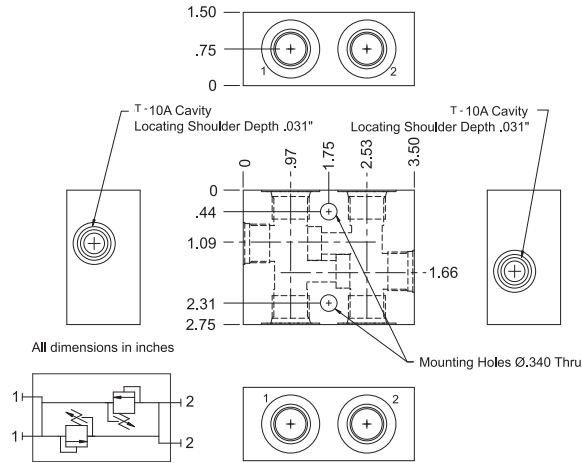
T-3A CAVITY CROSSOVER RELIEF VALVE BODIES  
FOR VALVE MODELS: GPR3, GDR3 Series



Ordering Information

G3A-XR	—	4P	—	A
Base Model #		Port Size		Material
		4P - 1/2 npt		A - Aluminum
		6P - 3/4 npt		
		T6 - sae #6		
		T8 - sae #8		
		T10 - sae #10		

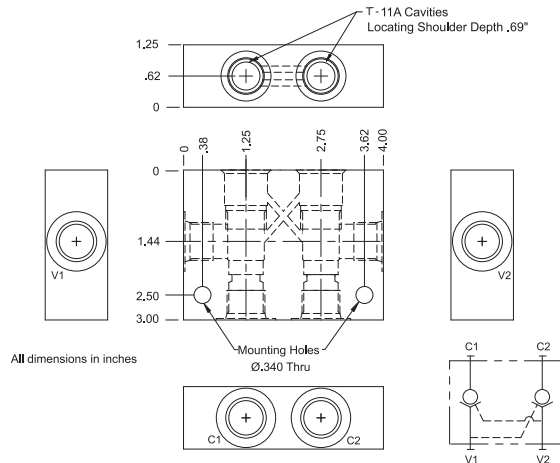
T-10A CAVITY CROSSOVER RELIEF VALVE BODIES  
FOR VALVE MODELS: GPR10, GDR10 Series



Ordering Information

G10A-XR	—	3P	—	A
Base Model #		Port Size		Material
		3P - 3/8 npt		A - Aluminum
		4P - 1/2 npt		
		T6 - sae #6		
		T8 - sae #8		

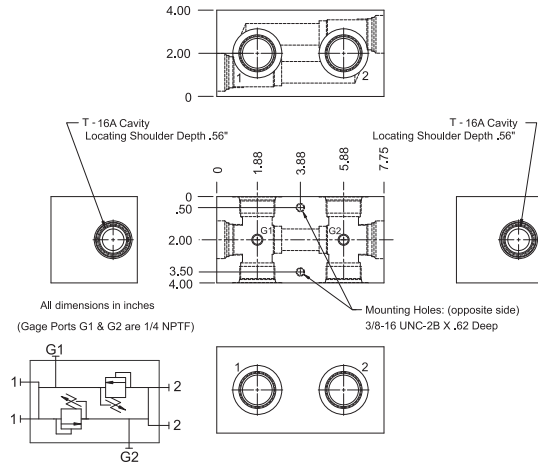
T-11A CAVITY CROSS-PILOTED VALVE BODIES  
FOR VALVE MODELS: GPOC11, GCB11, GCBS11 Series



Ordering Information

G11A-CP	—	3P	—	A
Base Model #		Port Size		Material
		3P - 3/8 npt		A - Aluminum
		4P - 1/2 npt		
		T6 - sae #6		
		T8 - sae #8		

T-16A CAVITY CROSSOVER RELIEF VALVE BODIES  
FOR VALVE MODELS: GPR16, GDR16 Series



Ordering Information

G16A-XR  
Base Model #



10P

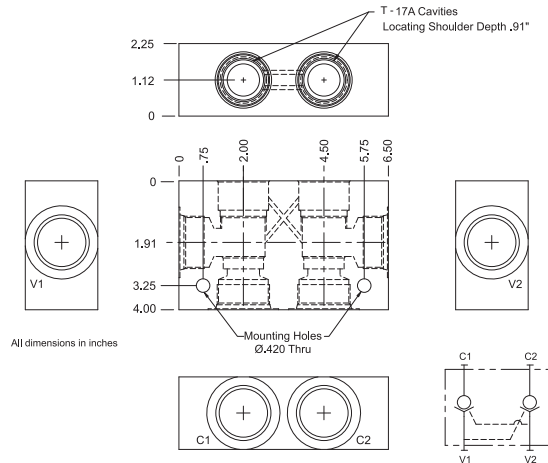


A

Port Size  
10P - 1 1/4 npt  
T20 - sae #20

Material  
A - Aluminum

T-17A CAVITY CROSS-PILOTED VALVE BODIES  
FOR VALVE MODELS: GPOC17, GCB17, Series



Ordering Information

G17A-CP  
Base Model #



6P



A

Port Size  
6P - 3/4 npt  
8P - 1 npt  
T12 - sae #12  
T16 - sae #16  
T20 - sae #20

Material  
A - Aluminum