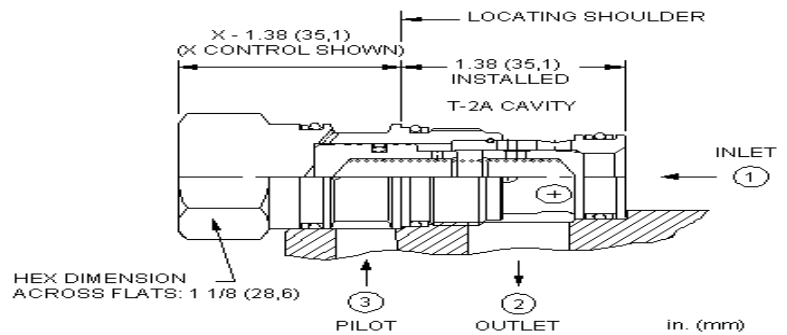
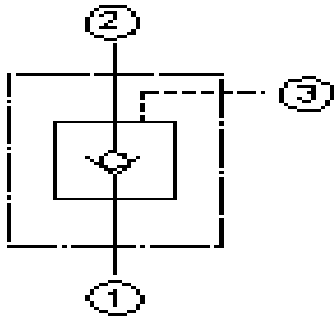


GPCC2

Check Valve

Pilot to Close
40 gpm (160 L/min)
T-2A Cavity



Operation Pilot-to-close check allows free flow from the valve port to the cylinder port and prevents reverse flow with no pilot pressure. With adequate pilot pressure applied to the pilot port, the pilot piston unseats the check poppet allowing reverse flow. Minimum pilot pressure required to open this valve is found by dividing the cylinder pressure by the valve's pilot ratio. (ex.. 1500 psi @ cylinder / (1.8:1) = 500 psi minimum pilot pressure required.)

Type Poppet type check valve with an internal pilot piston.

Material Precision ground & honed, hardened steel parts. Buna-N seals standard. Zinc plated.

Maximum Pressure 5,000 psi (350 bar)

Pilot ratio 1.8:1

Flow 40 gpm nominal (160 L/min)

Leakage 5 drops per minute (.35cc/min)

Fluid General hydraulic fluid

Cavity T-2A

Install torque 45-50 lb-ft (60-70Nm)

Options

GPCC2

Basic cartridge

- 1.8

Pilot Ratio
1.8 - 1.8:1

30

Cracking Pressure

4 - 4 psi
30 - 30 psi
75 - 75 psi

- N

Seals

N - Buna-N
V - Viton

