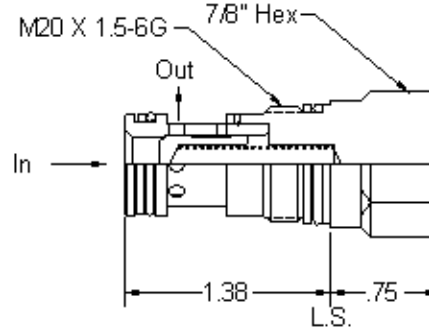
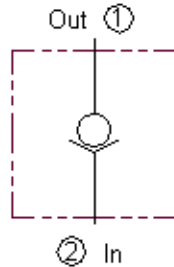


Nose to Side  
20 gpm (80 L/min)  
T-13A Cavity



Operation	Provides free flow in one direction and shuts off flow in the opposite direction.	
Type	Poppet check valve to fit industry standard cavity.	
Material	Precision ground & honed, hardened steel parts. Buna-N seals standard. Zinc plated.	
Maximum Pressure	5,000 psi	(350 bar)
Flow	20 gpm nominal	(80 L/min)
Leakage	5 drops per minute	(.35cc/min)
Fluid	General hydraulic fluid	
Cavity	T-13A	
Install torque	30-35 lb-ft	(45-50Nm)

Options

GCV13	-	4	-	N
Basic cartridge		Cracking Pressure		Seals
		4 - 4 psi		N - Buna-N
		30 - 30 psi		V - Viton
		75 - 75 psi		

