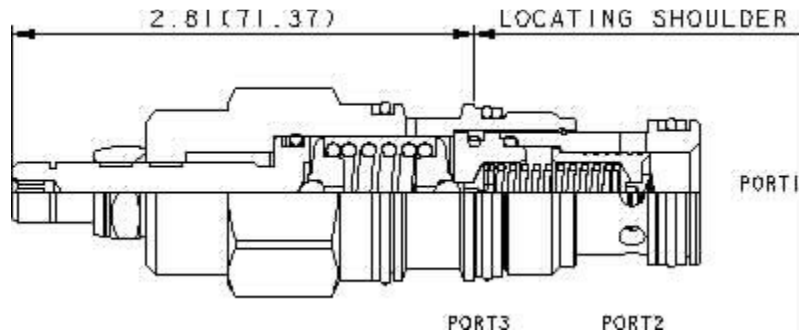
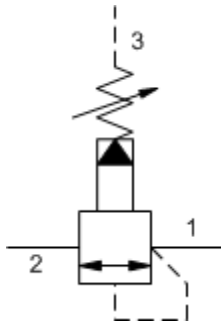


Piloted & Balanced piston
 30 GPM (120 L/min)
 T-2A Cavity



Type	A sequence valve allows flow to a secondary circuit only after pressure in the primary circuit has exceeded a preset value.	
Operation	This valve is normally closed. When pressure applied at port 1 rises above the valve setting, an internal pilot opens, a piston shifts and allows flow out port 2. The valve is insensitive to back pressure at port 2 because port 3 is an external drain to tank.	
Material	All steel construction. Precision ground & hardened parts. Buna-n seals are standard, viton available as an option.	
Factory setting at	4 gpm	15 L/min
Maximum Pressure	5,000 psi	(350 bar)
Nominal Flow	30 gpm	(120 L/min)
Maximum Leakage	2 in ³ /min @ 1000 psi	30 cc/min @ 70 bar
Response Time	10 ms (typical)	
Fluid	General hydraulic fluid	
Cavity	T-2A	
Install Torque	45-50 LB-FT	(60 – 70 Nm)

Options

GPS2	-	30	-	N	XXXX
Basic cartridge		Adjustment Range 30 - 100 3000 psi (std.set 1000psi) 40 - 150-4500 psi (std.set 1000 psi)		Seals N- Buna-n V- Viton	Factory Setting xx-In psi (ie 1000=1000psi)

