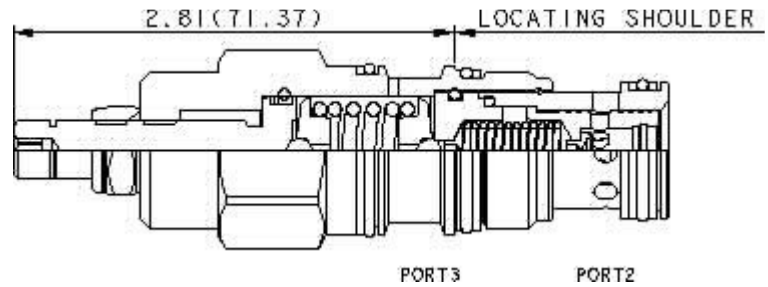
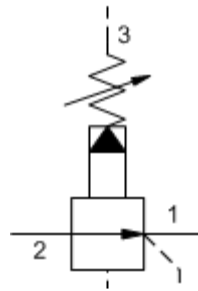




Gold Series GPRV2

Pressure Reducing/Relieving Valve

Pilot Operated
20 GPM (80 L/min)
T-2A Cavity



Type	A pressure reducing/relieving valve provides lower pressure to a branch circuit and relieving from the branch.		
Operation	This valve is normally open. Flow is applied into port 2, when downstream pressure in port 1 rises to the valve setting, an internal pilot opens, a piston shifts and meters flow into port 1 maintaining pressure at the valve setting. Provides relief function from port 1 to port 3 (tank). Port 3 is pilot flow draining to tank. Back pressure at port 3 increases the valve setting directly. Not for reverse flow.		
Material	All steel construction. Precision ground & hardened parts. Buna-n seals are standard, viton available as an option.		
Factory set at	Pressure gage at blocked Port 1		
Maximum Pressure	5,000 psi	(350 bar)	
Nominal Flow	20 gpm	(80 L/min)	
Pilot Flow	10–15 in ³ /min	0.16-0.25 L/min	
Fluid	General hydraulic fluid		
Cavity	T-2A		
Install Torque	45-50 LB-FT	(60 – 70 Nm)	

Options

GPRV2	-	30	-	N	Xxxx
Basic cartridge		Adjustment Range 30 – 100-3000 psi (std.set 200psi) 40 - 150-4500 psi (std.set 200 psi)		Seals N- Buna-n V- Viton	Factory Setting xx-In psi (ie 0200=200psi)

