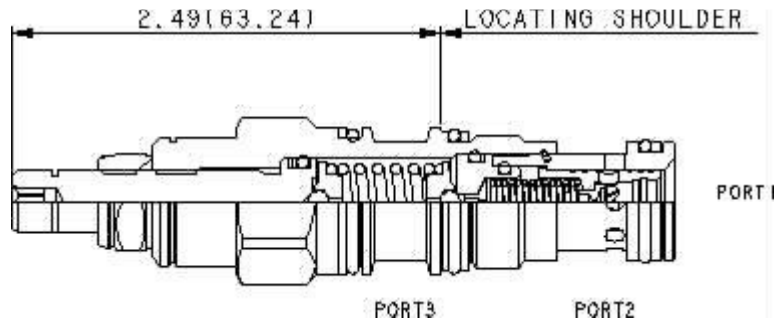
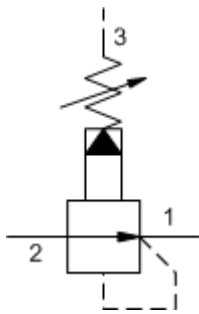


Gold Series  
**GPRD17 Pressure Reducing Valve**

Pilot Operated  
 40 GPM (160 L/min)  
 T-17A Cavity



Type	A reducing valve provides lower pressure to a branch circuit.	
Operation	This valve is normally open. Flow is applied into port 2, when downstream pressure in port 1 rises to the valve setting, an internal pilot opens, a piston shifts and meters flow into port 1 maintaining pressure at the valve setting. Port 3 is pilot flow draining to tank. Back pressure at port 3 increases the valve setting directly. Not for reverse flow.	
Material	All steel construction. Precision ground & hardened parts. Buna-n seals are standard, viton available as an option.	
Factory set at	Pressure gage at blocked Port 1	
Maximum Pressure	5,000 psi	(350 bar)
Nominal Flow	40 gpm	(160 L/min)
Pilot Flow	15–20 in <sup>3</sup> /mii	0.25-0.33 L/min
Fluid	General hydraulic fluid	
Cavity	T-17A	
Install Torque	150-160 LB-FT	(200 – 215 Nm)

Options

<b>GPRD17</b>	<b>-</b>	<b>30</b>	<b>-</b>	<b>N</b>	<b>XXXX</b>
Basic cartridge		Adjustment Range 30 – 100-3000 psi (std.set 200psi) 40 - 150-4500 psi (std.set 200 psi)		Seals N- Buna-n V- Viton	Factory Setting xx-In psi (ie 0200=200psi)

