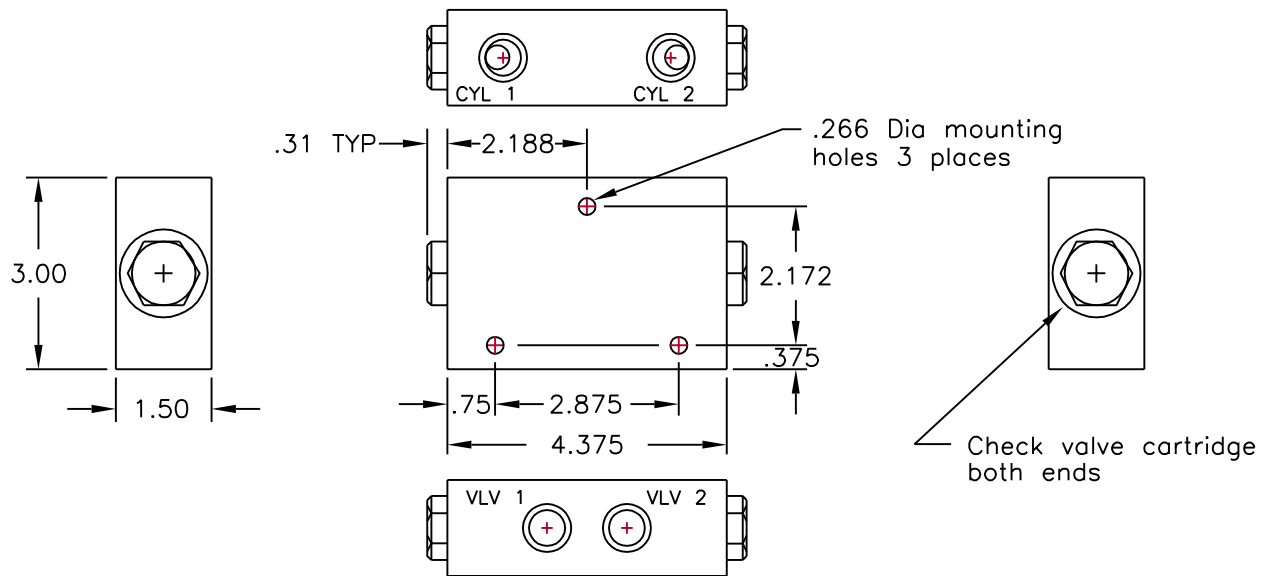




# DOUBLE PILOT CHECK VALVE



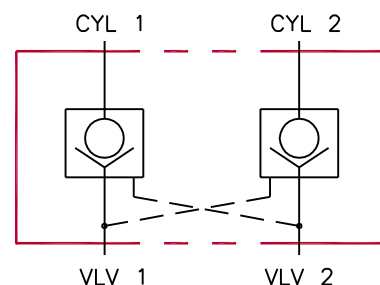
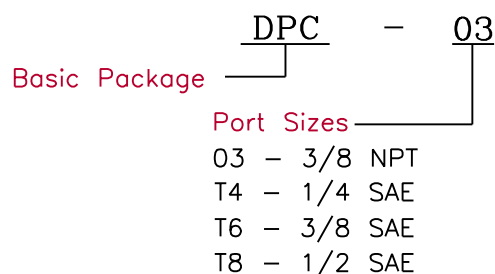
## SPECIFICATIONS

Type	Double pilot operated check valve used for locking double acting actuators in position until pressure is applied to move the actuator. Check valves are industry standard 10 series cartridges.	Material	Body is aluminum. Checks & shuttle are all steel & are hardened & ground.
Operation	When pressure is applied to one valve port a shuttle inside shifts and opens a check holding the opposite cylinder port load. When no pressure is applied to either valve port the shuttle is released and both check valves operate.	Fluid	General hydraulic fluid
		Pilot Ratio	4:1
		Max. Pressure	3000 psi
		Operating Temp.	-40°F to +200°F
		Seals	Buna-n

## DIMENSIONS

Model	Cylinder Ports	Valve Ports	Rated Flow
DPC-03	3/8 NPT	3/8 NPT	15 GPM
DPC-T4	SAE 4	SAE 4	15 GPM
DPC-T6	SAE 6	SAE 6	15 GPM
DPC-T8	SAE 8	SAE 8	15 GPM

## ORDERING INFORMATION



All dimensions in inches