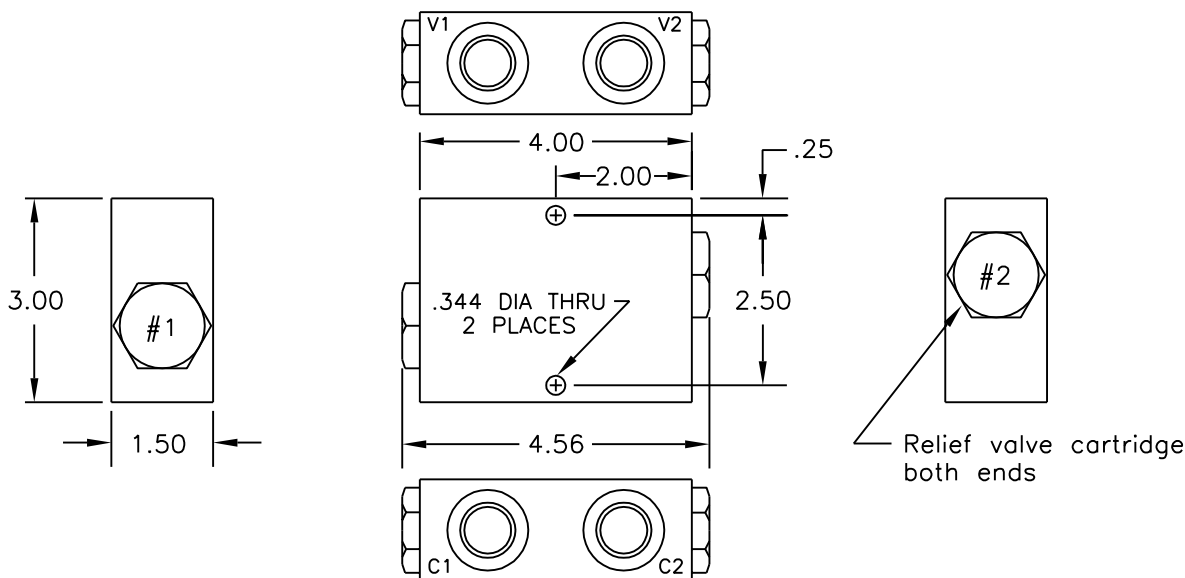




CROSSOVER RELIEF VALVE DIRECT ACTING

Non-adjustable



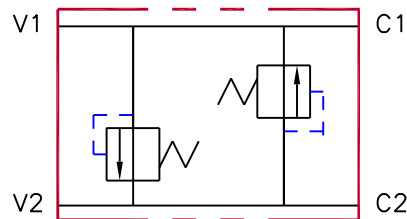
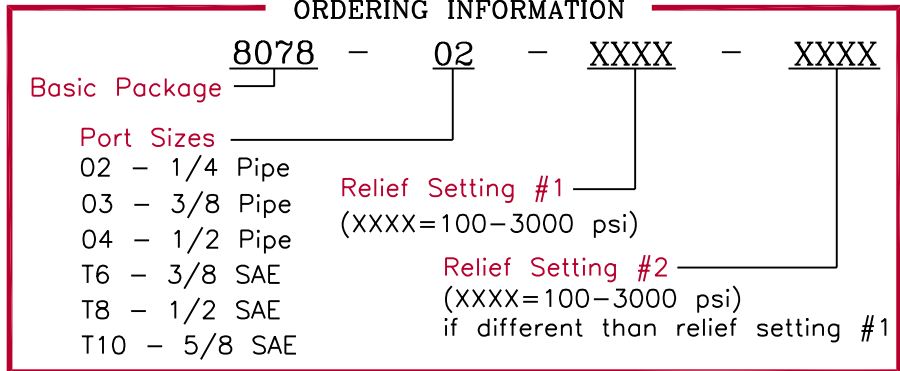
SPECIFICATIONS

| | | | |
|-----------|---|-----------------|--|
| Type | Crossover relief valve used to protect hydraulic motors from load induced pressure surges. Direct acting ball type relief. | Material | Aluminum body with hardened steel internal parts |
| Operation | Allows flow to pass freely from V1 to C1 & V2 to C2. The relief opens when pressure exceeds the preset setting allowing flow to enter the opposite cylinder port. | Relief Setting | Preset by factory to customer specified value. |
| | | Fluid | General hydraulic fluid |
| | | Max. Pressure | 3000 psi |
| | | Operating Temp. | -40°F to +200°F |
| | | Seals | Buna-n |

DIMENSIONS

| Model | Port Sizes | Pressure Range | Rated Flow |
|----------------|------------|----------------|------------|
| 8078-02-XX-XX | 1/4 NPT | 100 - 3000 PSI | 10 GPM |
| 8078-03-XX-XX | 3/8 NPT | 100 - 3000 PSI | 10 GPM |
| 8078-04-XX-XX | 1/2 NPT | 100 - 3000 PSI | 10 GPM |
| 8078-T6-XX-XX | SAE 6 | 100 - 3000 PSI | 10 GPM |
| 8078-T8-XX-XX | SAE 8 | 100 - 3000 PSI | 10 GPM |
| 8078-T10-XX-XX | SAE 10 | 100 - 3000 PSI | 10 GPM |

ORDERING INFORMATION



All dimensions in inches