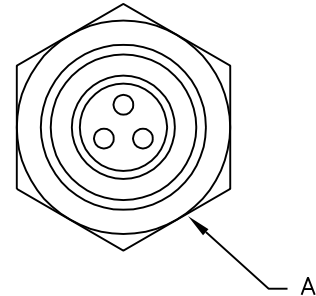
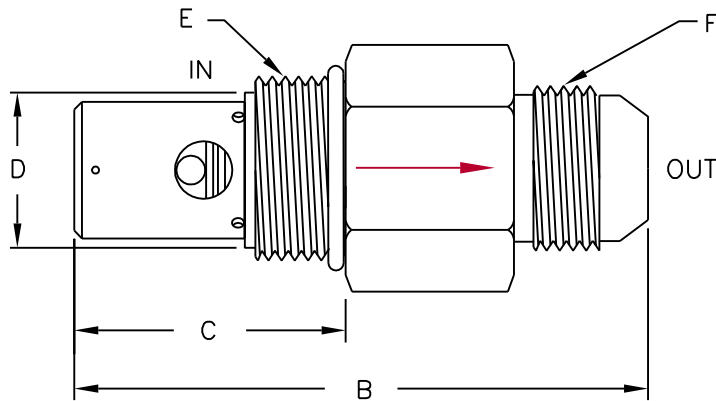




**FIXED FLOW CONTROL**  
 PRESSURE COMPENSATED W/FREE REVERSE FLOW CHECK  
 SAE Threaded Cartridge



(Arrow indicates direction of controlled flow)

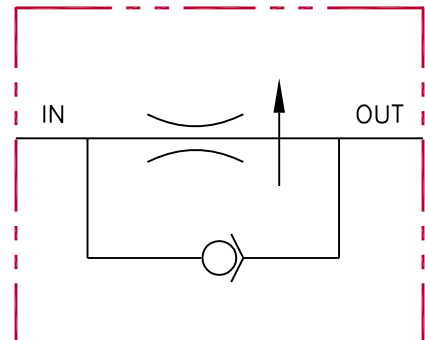
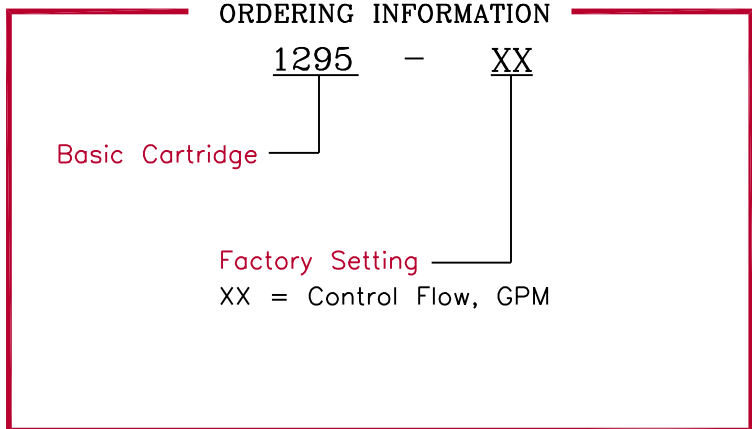
**SPECIFICATIONS**

Type	Pressure compensated flow control.	Flow	Preset by factory to customer specified value (Tolerance: ±15%)
Operation	Controls flow in one direction to a preset maximum over a varying pressure range. Internal check allows free reverse flow.	Max. Pressure	3,000 psi
Material	All steel construction	Press. Differential	50 to 100 psi
Rated Flow	Up to 20 gpm	Fluid	General hydraulic fluid
		Operating Temp.	-40°F to +200°F
		Seals	Buna-n

**DIMENSIONS**

Model	A Hex	B	C	D (Bore Dia.)	E (Inlet)	F (Outlet)
1295-XX	1 3/8	3.70	1.75	ø1.0312/1.0938 X 2.120 Deep	1 3/16-12 unf-2a (Male SAE 14)	1 1/16-12 un-2a (Male 3/4 JIC 37*)

**ORDERING INFORMATION**



All dimensions in inches