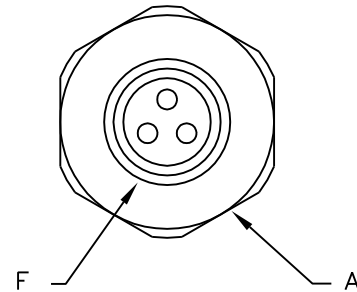
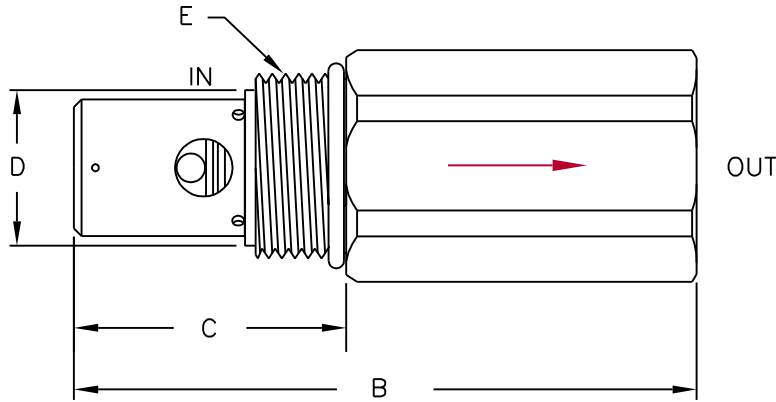




**FIXED FLOW CONTROL**  
 PRESSURE COMPENSATED W/FREE REVERSE FLOW CHECK  
 SAE Threaded Cartridge



(Arrow indicates direction of controlled flow)

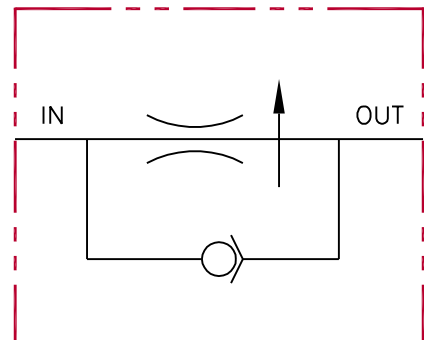
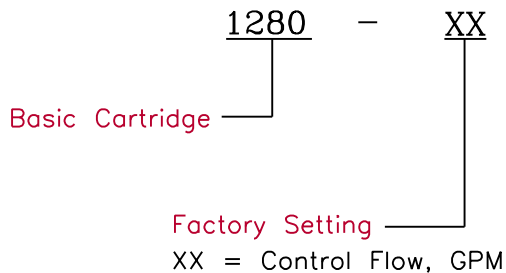
**SPECIFICATIONS**

Type	Pressure compensated flow control.	Flow	Preset by factory to customer specified value (Tolerance: ±15%)
Operation	Controls flow in one direction to a preset maximum over a varying pressure range. Internal check allows free reverse flow.	Max. Pressure	3,000 psi
		Press. Differential	400 to 500 psi
		Fluid	General hydraulic fluid
Material	All steel construction	Operating Temp.	-40°F to +200°F
Rated Flow	Up to 20 gpm	Seals	Buna-n

**DIMENSIONS**

Model	A Hex	B	C	D (Bore Dia.)	E (Inlet)	F (Outlet)
1280-XX	1 3/8	4.00	1.75	ø1.0312/1.0938 X 2.120 Deep	1 3/16-12 unf-2a (Male SAE 14)	3/4-16 unf-2b (Female SAE 8)

**ORDERING INFORMATION**



All dimensions in inches